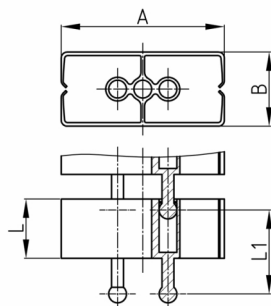


### Product Group KBKCUB

Rectangular cable chain for horizontal and vertical cable ducting (length: uncompressed appr. 100 cm / compressed appr. 69 cm)

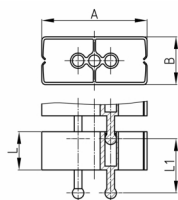


#### Standard Colours

- black
- white
- uncoloured-translucent
- silver

#### Material

- Polypropylene (PP)



#### Product information

- Flexible cable ducting system for horizontal and vertical cable ducting.
- Any assembly possibilities with fixing elements "KBKCUBZ1" or "KBKZ8S".
- The chain links arranged displaceable to each other.
- 2 connectors for optimal force transmission, especially torque, pressure- and transverse forces
- Two-chamber-system for separating data and power lines
- Laying as a closed cable chain channel via blocking the chain.
- Closed centre channel to accommodate mounting rope "KBKZ2A" or hauling rope "KBKZ2B".
- Extended or pushed together, rigid laying of the cable routing chain especially suitable for wall, furniture, undertable and ceiling mounting.
- The pushed together, rigid installation of the cable guide chain is conditionally suitable for low-traffic passage areas.
- Tool-free connection to all standard floor outlets by using "KBKZ10L / Clip-L Floor (PRO+CUB+CMX)".
- Tool-free and time saving installation of cables by zipper principle.
- Optimized possibility for lateral squeeze-proof unthreading of the cables.
- 3-D-movable and appr. 35 % lengthwise flexible
- Tool-free branching through distributors
- Compatible with cable chain "KBKPRO", "KBKCL", "KBKFLII" and "KBKCMX" (intermateable).
- Compatible with KBK Bridge
- Extensive range of adapters
- Short-term loads up to 80 kg on 5 chain elements at 20 °C room temperature

Order Number	A	B	L	L1	Element(s)	For up to x cable
	mm	mm	mm	mm	piece(s)	piece(s)
KBKCUB 100 cm	55	25	20	35	34	25