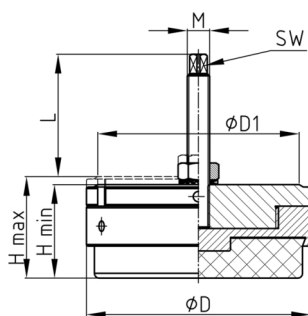


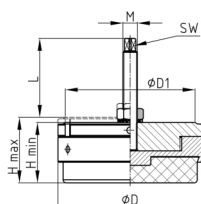
### Product Group MFAM

Zinc-plated steel machine feet for damping tangential acceleration



#### Material

- Base body: zinc-plated steel
- Rubber: NBR 90 Shore



#### Product information

- The machine foot counteracts the tangential acceleration forces during the working process of machines. These forces cause an imbalance which stresses the clamping / bearing points of the machines.
- The load capacity of the screw (buckling length!) may be less than indicated in the table.
- Put the base with the flange completely screwed under the machine bed.
- From above screw the threaded stem in the hole of the machine bed.
- To align the machine, use the three holes in the top flange or the three milled grooves.
- Holes and grooves are arranged on the circumference at an angle of  $120^\circ$  to each other.
- Machine tools, injection moulding units, shearing machines, vibrators, printing machines, etc. ...

Order Number	D	D1	F max.	F min.	H max.	H min.	L	M	WAF
	mm	mm	kg	kg	mm	mm	mm		mm
MFAM140 / M12	140	125	1950	950	66	60	50	M12	8
MFAM160 / M16	160	145	2900	1400	66	60	73	M16	10